



InStride[®]



2009

Technology



InStride

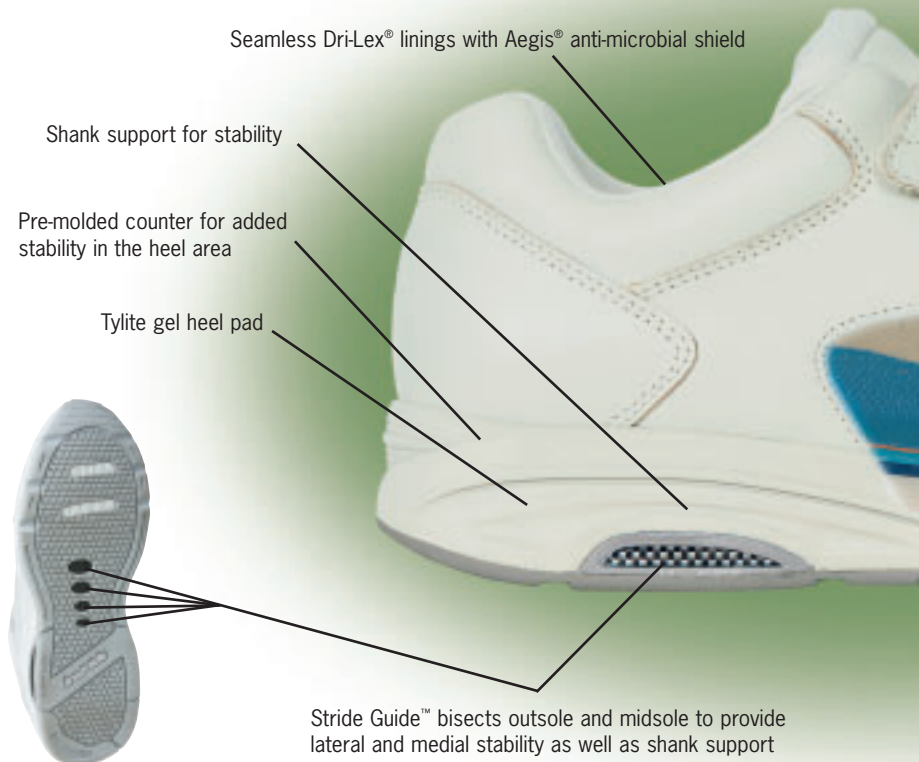


InStride Shoes was founded to provide comfortable, well fitting shoes for walking and leisure activities that provide significant relief for people with foot problems ranging from bunions, hammertoes and corns, to more significant diabetes related problems.

Developed in conjunction with Podiatrists, Pedorthists, and other medical and shoe construction specialists, InStride shoes provide both a protective function as well as relief from regular footwear due to their ability to provide a more precise and comfortable fit.

InStride Shoes feature the **CFS** – Custom Fit System – made with a series of removable insoles that provide the extra depth that allow InStride to fit even the most difficult feet with comfort beyond compare. InStride shoes

Features/Benefits



Seamless Dri-Lex® linings with Aegis® anti-microbial shield

Shank support for stability

Pre-molded counter for added stability in the heel area

Tylite gel heel pad

Stride Guide™ bisects outsole and midsole to provide lateral and medial stability as well as shank support



are made with high quality full-grain leather, with Nubuc and Lycra styles available with lace or strap closures. When combined with non-irritating seamless linings, slip-resistant outsoles, the latest in shock absorbing and cushioning technology, InStride shoes assure the best possible combination of quality construction and good looking, contemporary styling for everyone.

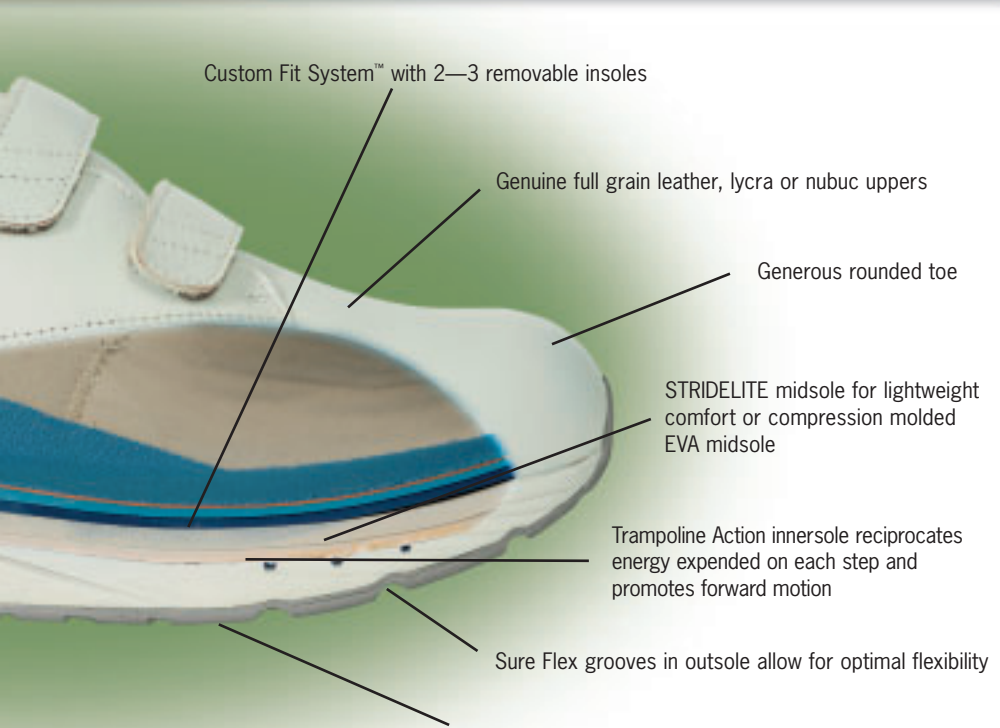
InStride Custom Fit System

The InStride Custom Fit System (CFS) provides 2—3 levels of comfort and meets the changing needs of the “hard to fit feet”. The 2—3 removable insoles can be used in any combination to customize the shoe or allow sufficient room for an orthotic insert. Meets Medicare TSD guidelines. Accommodates new “K”-code inserts – A5512.



Patent Pending

Please note: model shoe cannot accurately display all technology features.



InDurance outsole provides high abrasion/high mileage durability or Dupont Everlon® slip resistant compound in outsole provides traction and skid resistance on slippery surfaces

Women's



InStride



Nellie II

The Nellie II has the stylish look of our classic "Mary Jane" shoes that we have taken to the next level, offering more layers of comfort and ease of fit with our 3 layer Custom Fit System. This shoe features breathable full grain rich leather upper for easy cleaning, seamless Dri-Lex lining to control moisture, padded heel collar allowing for additional comfort, pre-molded heel counter for extra support, easy to close strap and a lightweight slip resistant bottom. A shoe that is so versatile that it can be worn everyday.

Saddle Brown Leather*
#10714



Black Leather
#10700

Bone Leather
#10703

Black Lycra
#10710



- Meets Medicare Shoe Bill requirements
- Nellie II black is available in comfort-stretch Lycra

Available Sizes: Women's – Medium/Wide/Extra Wide: 5.5 – 10, 11
*#10714 available Spring 2009

Nellie

The Nellie is a classic "Mary Jane" style shoe utilizing comfort, function and fit. Airstride™ EVA cushion in the heel and at flex points in forefoot add additional impact protection, shock absorption, and comfort.

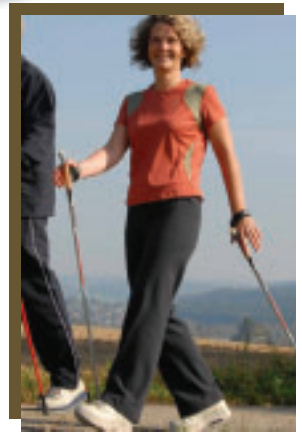
The Nellie has two removable inserts.

Black Leather
#1007



- Meets Medicare Shoe Bill Requirements

Available Sizes: Women's – Medium/Wide/Extra Wide: 5 – 10, 11, 12





Women's

Sanibel II



*Bone Leather
#2415



**Black Leather
#2410



*Black Leather
#2400

The Sanibel II is a stylish walker featuring a supple full grain leather upper, seamless Dri-Lex lining to control moisture, InStride's 3 layer Custom Fit System to meet the changing needs of the "hard to fit feet", pre-molded heel counter offers extra support, tri-ring for easy lacing, padded heel collar for extra comfort and a light weight slip resistant bottom. Also available in easy to close strap!



- Meets Medicare Shoe Bill Requirements

Available Sizes: Women's – Medium/Wide/Extra Wide: 6 – 10, 11
*#2400 and #2415 available Spring 2009; **#2410 available Fall 2009



Taupe Leather
#2201



White Leather
#2202



Black Leather
#2210



Black Leather
#2200

Sanibel

The Sanibel offers women a fashionable shoe with a seamless lining and the added volume to accommodate an orthotic insert. Of course, with our Custom Fit System™, the shoe can be worn right off the shelf with all three layers for extra cushioning and "3 layers of comfort".



- Meets Medicare Shoe Bill Requirements

Available Sizes: Women's – Medium/Wide/Extra Wide: 6 – 11, 12

Women's



InStride



Malibu

A stylish, casual walker with the ability to meet the foot care needs of many individuals. The Malibu was developed with a focus on the biomechanics of the female foot featuring a supple full grain leather upper, blucher construction allowing a wider opening for the "hard to fit feet", padded heel collar, Dri-Lex seamless lining to control moisture, pre-molded heel counter for extra support, our 3 layer Custom Fit System to accommodate an orthotic insert or extra comfort for an active individual and a lightweight slip resistant bottom. A perfect fit for an active lifestyle!

White Leather
#9202

Black Leather
#9200

Bone Leather
#9203



- Meets Medicare Shoe Bill requirements

Available Sizes: Women's – Medium/Wide/Extra Wide: 5.5 – 10, 11

Venice

The Venice is a lightweight women's walking shoe developed with a focus on the biomechanics of the female foot featuring a supple full grain leather upper, blucher construction allowing a wider opening for the "hard to fit feet", convenient single strap closure, padded heel collar, Dri-Lex seamless lining to control moisture, pre-molded heel counter for extra support, our 3 layer Custom Fit System to accommodate an orthotic insert or extra comfort for an active individual and a lightweight slip resistant bottom. A perfect fit for an active lifestyle!

Saddle Brown Leather*
#9414

Black Leather
#9410

Bone Leather
#9413

Navy Leather*
#9405

Brown Nubuc
#9416



- Meets Medicare Shoe Bill requirements

Available Sizes: Women's – Medium/Wide/Extra Wide: 5.5 – 10, 11

*#9405 and #9414 available Spring 2009



Newport



Black Leather #9000

White Leather #9012

Black Leather #9010

The Newport is the culmination of all things necessary for an active lifestyle. This attractive walker combines style and technology. This shoe boasts the finest full grain leather as well as InStride's 3-Layer Custom Fit System™ (CFS™), allowing for the perfect fit for everyone. Whether you require a diabetic insert or you are a serious fitness walker who requires an orthotic device, the extra volume in this shoe will accommodate whatever you put in it. Built on a sturdy CMEVA midsole, the Newport promises to provide a stable platform for countless miles of walking.

White Leather #9002



- Meets Medicare Shoe Bill Requirements

Available Sizes: Women's – Medium/Wide/Extra Wide: 6 – 10, 11



Sports White Leather #40123

White Leather #40121

Black Leather #40122

White Leather #40021

Black Leather #40022

Monterey

Function meets fashion in this stylish walker. Full grain leather upper with a seamless lining, blucher construction to allow for a wider opening for that "hard to fit foot", padded heel collar and InStride's 3 layer Custom Fit System offers the room for an orthotic device or extra comfort for an active individual. A light weight slip resistant bottom offers stability and comfort. Available in easy lace or quick strap closure. A perfect fit for an active lifestyle!

Sports White Leather #40023



- Meets Medicare Shoe Bill Requirements

Available Sizes: Women's – Medium/Wide/Extra Wide: 6 – 10, 11

Women's



InStride



Biscayne

Finally, there is an option for women who require a stretchable shoe but want a classic casual look. The Lycra vamp makes it perfect for those with hammertoes, bunions, or edema. While meeting these medical needs, it provides the style that the young-at-heart still desire.

Black Leather/Lycra
#1310



- Meets Medicare Shoe Bill Requirements

Available Sizes: Women's – Medium/Wide/Extra Wide: 6 – 10, 11, 12

LaJolla

The LaJolla exemplifies InStride's continued pursuit to produce the most stylish comfort footwear. Featuring a breathable soft lycra and leather forefoot able to stretch for an individual with edema and forefoot ailments. Single Strap closure for quick and easy dressing, blucher construction for wider opening, padded heel collar, Dri-Lex seamless lining to control moisture, InStride's 3 layer Custom Fit System, pre-molded heel counter for support and stability all offered on a light weight slip resistant bottom. A smart choice for a busy work day or a leisurely day at the mall!

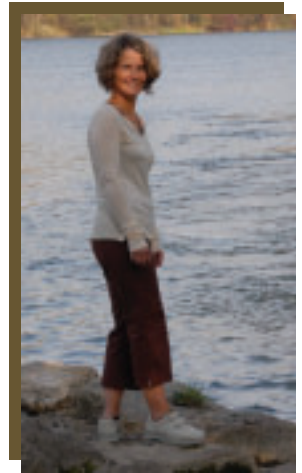
Black Leather/Lycra*
#7010



- Meets Medicare Shoe Bill Requirements

Available Sizes: Women's – Medium/Wide/Extra Wide: 6 – 10, 11

*#7010 available Spring 2009





Black Leather
#1002

Sure Step

The Sure Step uses a genuine, full grain leather upper. The seamless lining provides great feel and function for sensitive feet and is great for people with diabetes or those with therapeutic shoe needs. The Sure Step has two removable inserts.



Black Leather
#1001



- Meets Medicare Shoe Bill Requirements

Available Sizes: Women's – Wide/Extra Wide: 6 – 13, 14, 15; XX Wide: 6 – 13, 14



Black Leather/Lycra
#1003

Soft Step

The Soft Step combines a genuine leather back quarter with a durable, high quality lycra toe box. This shoe is ideal for those with diabetes and for those with hammertoes, bunions, or other foot deformities. The Soft Step has two removable inserts.



Black Leather/Lycra
#1004



- Meets Medicare Shoe Bill Requirements

Available Sizes: Women's – Wide/Extra Wide 6 – 13, 14, 15; XX Wide 6 – 13, 14

Men's



InStride



Dakota

The Dakota exemplifies InStride's continue pursuit to produce the most stylish footwear for diabetics. This casual/dress lightweight walker features a plush full grain leather upper, Dri-Lex seamless lining to control moisture, blucher construction allows for wider opening for the "hard to fit feet", padded heel collar, pre-molded heel counter for extra support, our 3 layer Custom Fit System offering room for an orthotic insert or extra cushioning and a slip resistant bottom. A perfect choice for a busy lifestyle.

Brown Leather
#96604



Off White Leather
#96111

Black Leather
#96600



- Meets Medicare Shoe Bill Requirements

Available Sizes: Men's – Medium/Wide/Extra Wide: 7 – 12, 13, 14

Durango

The Durango exemplifies InStride's continue pursuit to produce the most stylish footwear for diabetics. This casual/dress lightweight walker features a plush full grain leather upper, Dri-Lex seamless lining to control moisture, blucher construction allows for wider opening for the "hard to fit feet", padded heel collar, pre-molded heel counter for extra support, our 3 layer Custom Fit System offering room for an orthotic insert or extra cushioning and a slip resistant bottom. The double strap closure makes dressing a cinch for a perfect fit every time.

Black Leather*
#96610



Brown Leather*
#96614



- Meets Medicare Shoe Bill Requirements

Available Sizes: Men's – Medium/Wide/Extra Wide: 7 – 12, 13, 14

*#96610 and #96614 available Spring 2009



Bone Leather
#1203

Black Leather
#1210



Black Leather
#1200



- Meets Medicare Shoe Bill Requirements

Available Sizes: Men's – Medium/Wide/Extra Wide: 7 – 12, 13



Black Leather
#221

Black Leather
#131



Chestnut Leather
#224

Sojourn

The Sojourn is a stylish casual/dress shoe for a busy day at work or a casual dinner. Featuring a breathable full grain rich leather upper, Dri-Lex seamless lining to control moisture, padded heel collar, pre-molded heel counter for extra support, our 2 layer Custom Fit System allows room for an orthotic insert or extra comfort. Superior fit, support and comfort all on our light weight slip resistant lug bottom, a smart choice for an active individual! Also available in single quick strap closure.



- Meets Medicare Shoe Bill Requirements

Available Sizes: Men's – Medium/Wide/Extra Wide: 7 – 13, 14

Men's



InStride



Newport

The Newport is the culmination of all things necessary for an active lifestyle. This attractive walker combines style and technology. This shoe boasts the finest full grain leather as well as InStride's 3-Layer Custom Fit System™ (CFS™), allowing for the perfect fit for everyone. Whether you require a diabetic insert or you are a serious fitness walker who requires an orthotic device, the extra volume in this shoe will accommodate whatever you put in it. Built on a sturdy CMEVA midsole, the Newport promises to provide a stable platform for countless miles of walking.

Black Leather
#6000



White Leather
#6012



Black Leather
#6010



White Leather
#6002



- Meets Medicare Shoe Bill Requirements

Available Sizes: Men's – Medium/Wide/Extra Wide: 8 – 12, 13, 14

Monterey

Monterey was developed for the young at heart. This stylish walker offers full grain leather upper for easy cleaning, Dri-Lex seamless lining to control moisture, blucher construction to allow for a wider opening for that "hard to fit foot", padded heel collar and InStride's 2 layer Custom Fit System offers the room for an orthotic insert or the extra comfort for an active individual. A light weight slip resistant bottom offers stability and comfort. Available in easy lace or quick strap closure. A perfect fit for an active lifestyle!

Black Leather
#30012



White Leather
#30111



Black Leather
#30112



White Leather
#30011



- Meets Medicare Shoe Bill Requirements

Available Sizes: Men's – Medium/Wide/Extra Wide: 7 – 12, 13



Black Leather
#1002

Sure Step

The Sure Step uses a genuine, full grain leather upper. The seamless lining provides great feel and function for sensitive feet and is great for people with diabetes or those with therapeutic shoe needs. The Sure Step has two removable inserts.



Black Leather
#1001



- Meets Medicare Shoe Bill Requirements

Available Sizes: Men's – Medium/Wide: 5 – 12, 13, 14; Extra Wide: 6 – 12, 13



Black Leather/Lycra
#1003

Soft Step

The Soft Step combines a genuine leather back quarter with a durable, high quality lycra toe box. This shoe is ideal for those with diabetes and for those with hammertoes, bunions, or other foot deformities.

The Soft Step has two removable inserts.



Black Leather/Lycra
#1004



- Meets Medicare Shoe Bill Requirements

Available Sizes: Men's – Medium/Wide 5 – 12, 13, 14; Extra Wide 6 – 12, 13

Men's

InStride

LaJolla

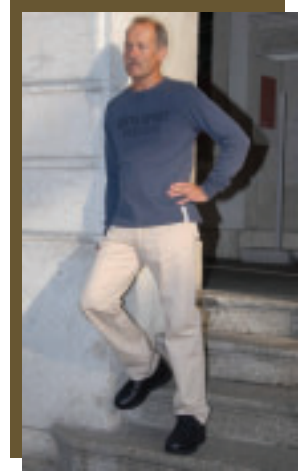
The LaJolla exemplifies InStride's continued pursuit to produce the most stylish comfort footwear. Featuring a breathable soft lycra and leather forefoot able to stretch for an individual with edema and forefoot ailments. Single Strap closure for quick closing, blucher construction for wider opening for the "hard to fit feet", padded heel collar, seamless lining, InStride's 2 layer Custom Fit System, pre-molded heel counter for support and stability all offered on a light weight slip resistant bottom. A smart choice for a busy work day or a leisurely day around the house!

Black Leather/Lycra
#8010



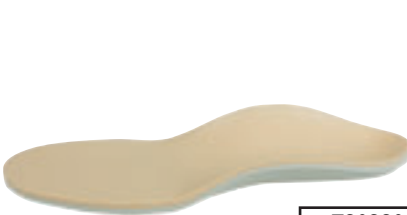
- Meets Medicare Shoe Bill Requirements

Available Sizes: Men's – Medium/Wide/Extra Wide: 7 – 12, 13
*#8010 available Spring 2009



InStride Multi-Density Diabetic Inserts

- Meets the New A5512 Medicare Code for Reimbursement
Base layer: $\frac{3}{16}$ " Stratus EVA Compound with Shore A Durometer of 40
Top Layer: $\frac{1}{8}$ " Primalene Memory Foam
- Designed to be used with all manufacturers' shoes
 - Heat moldable, providing maximum surface contact
 - Full length and Multi Density specially designed for the diabetic foot



Z30320
(High Profile)



Z30390
(Low Profile)

- Meets Medicare Shoe Bill Requirements

Sizes: 4 – 4.5, 5 – 5.5, 6 – 6.5, 7 – 7.5, 8 – 8.5, 9 – 9.5, 10 – 10.5, 11 – 11.5, 12 – 13, 14+



InStride Diabetic Comfort Care Socks

Combining therapeutic support with unmatched comfort, the Comfort Care System Socks from InStride are specially designed for people with diabetes, arthritis and other foot problems. A unique weave of silver fibers promotes circulation while inhibiting the growth of bacteria and fungi, keeping feet odor free. Foot care never felt so good!

Catawba Sox

P.O. 517, Conover, NC 28613

Telephone (828) 464-1690 • FAX (828) 465-6359

Unique non-binding knit construction in top specifically designed to give extra cross-stretch for maximum comfort. Extra-wide, non restrictive top stretches without binding or slipping.



Flat, soft special toe closure to prevent pressure sores and irritation.

Soft padded lining in sole for extra protection, X-Static® Silver Coated Fiber, eliminates 99.9% of bacteria in less than one hour of exposure.



Shoe Riser Display



Slat Wall Display

Displays



InStride

29 Polhemus Drive, Hillsborough, NJ 08844



Phone: 866-9MY-FEET
Fax: 908-359-7434
www.instrideshoes.com